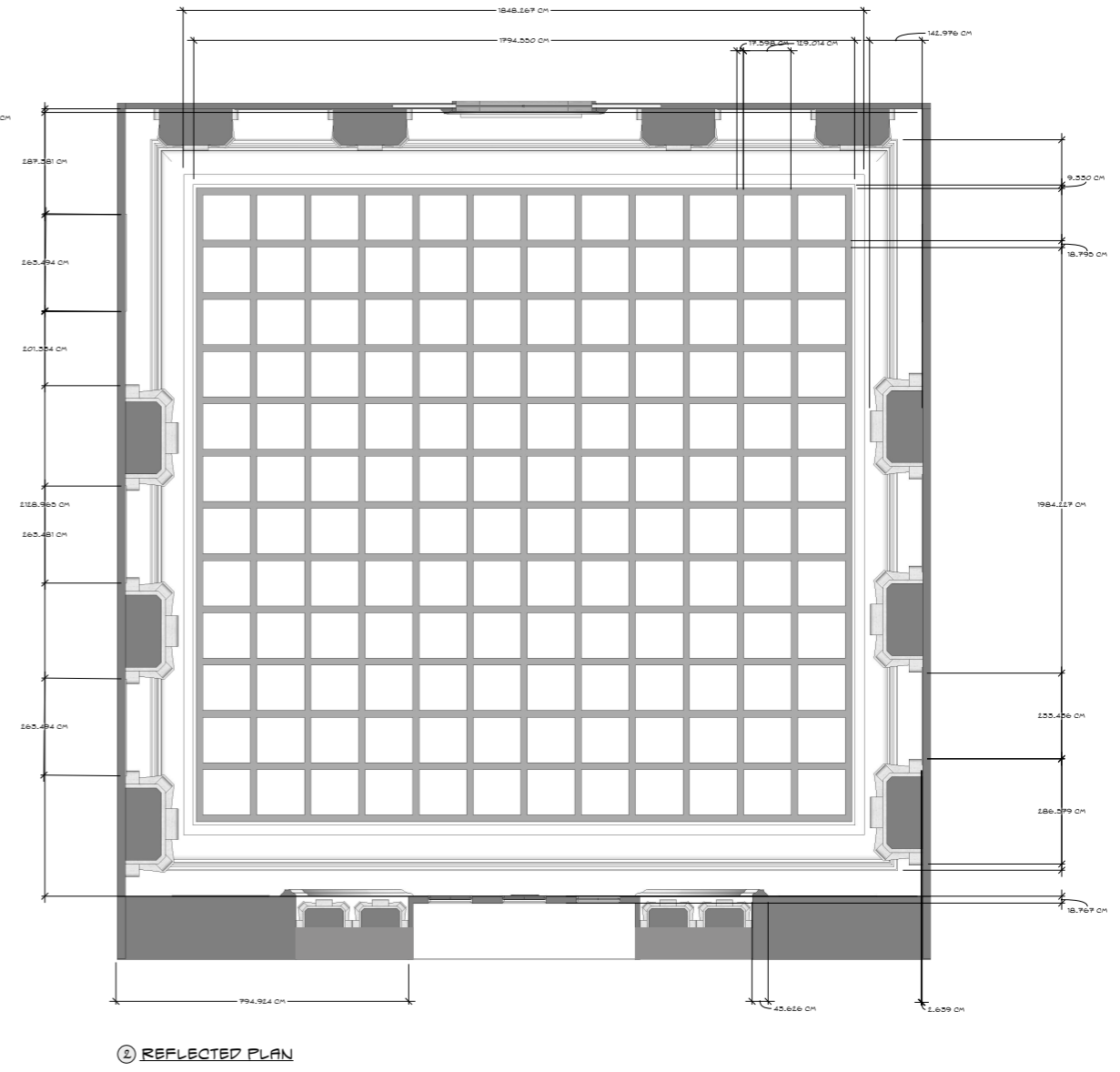
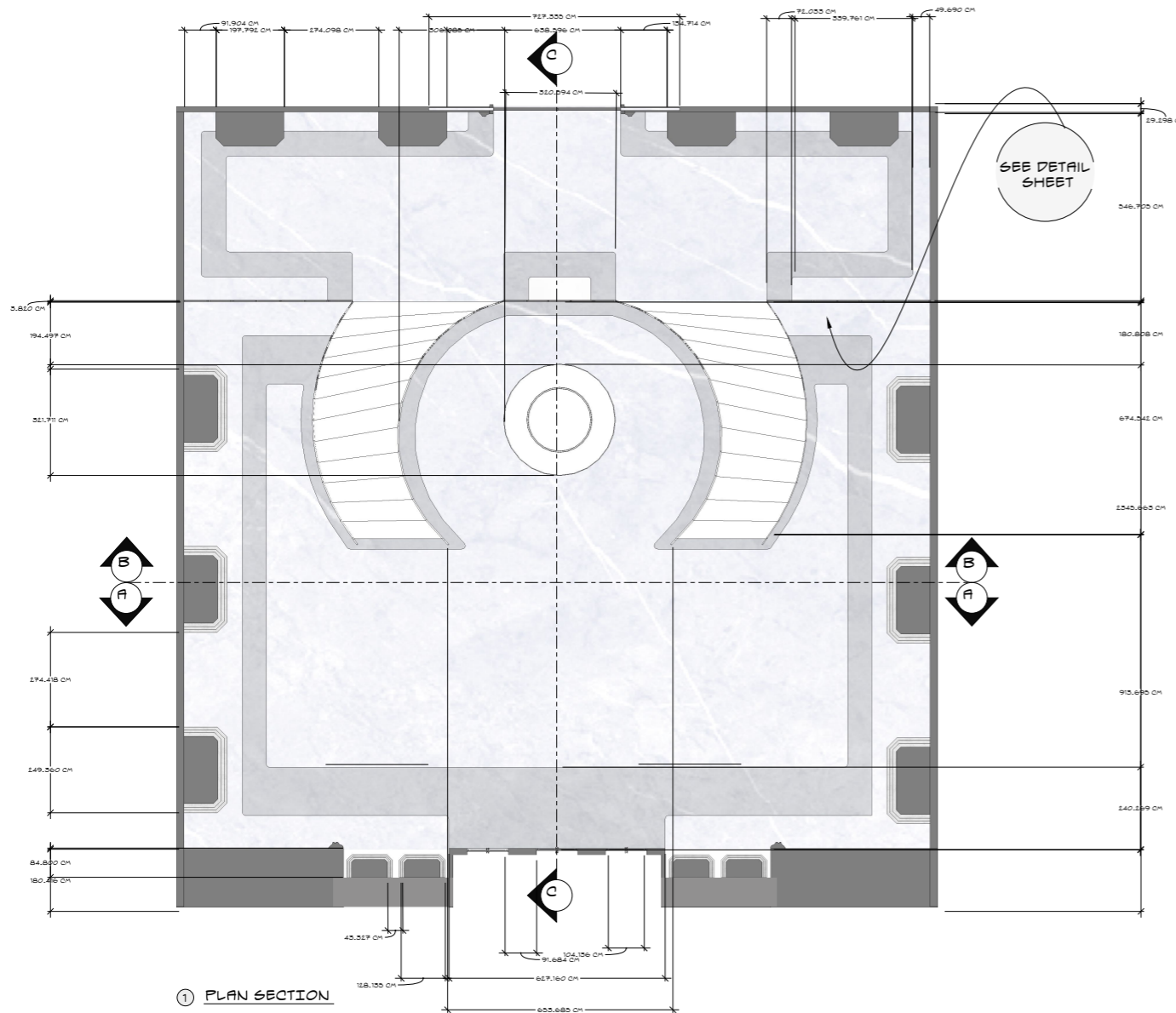


1984 INT SET - MINISTRY TRUTH ENTRANCE HALL - SHEET ONE MAY 2021



NOTES:

ALL PAINT FINISHES TBD PLEASE DISCUSS WITH ART DEPARTMENT

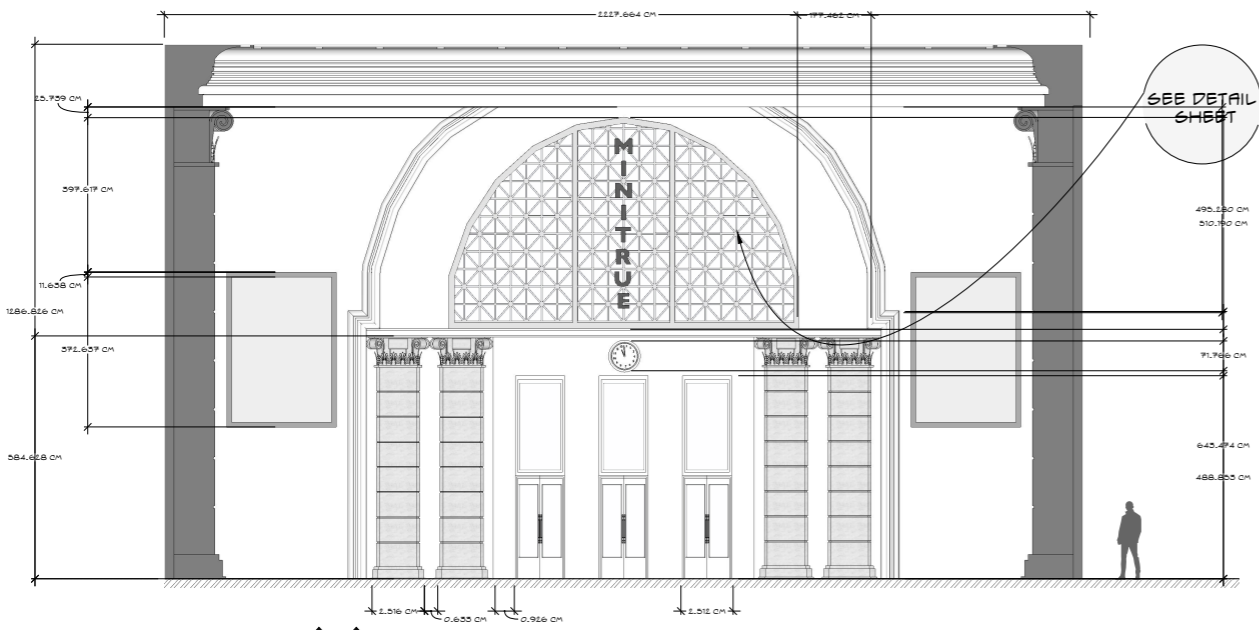
ALL LOUVRES ARE TO BE SCRIBED INTO THE SET. LOUVRE SHOWN HERE IS AT MAXIMUM LENGTH - ALL LOUVRES WILL BE DIFFERING SIZES PLEASE REFER TO DWG 101 (LOUVRE PLAN) FOR SIZES

INTERNAL CONSTRUCTION SHOWN HERE IS JUST A SUGGESTION

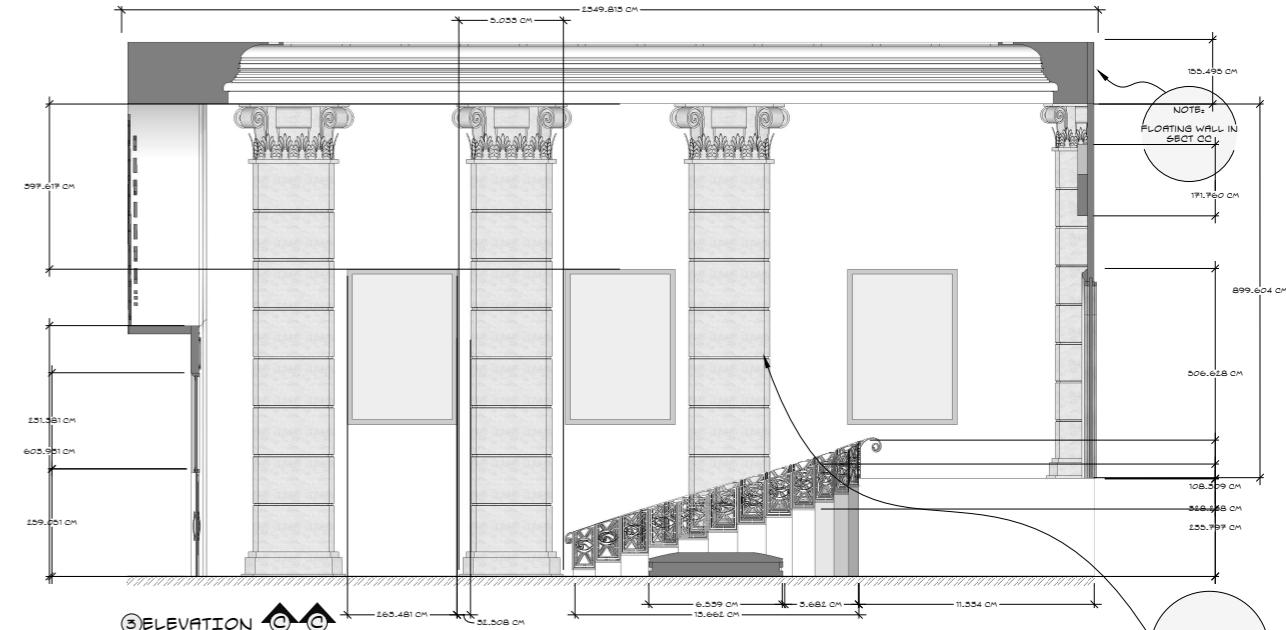
THANKS.

1984		
DRAWING TITLE: 1984 INT SET- MINISTRY OF TRUTH ENTRANCE HALL		
PRODUCTION DESIGNER: EMILY HOLMES	LOC/STAGE: PINEWOOD STUDIOS STAGE 1	
SET: MINISTRY OF TRUTH (INTERIOR)	SCALE: 1MM=100MM (1:100)	
DRAWING BY: EMILY HOLMES	SET NO: 1	DRAWING NO:
DATE DRAWN: 12/5/21	NOTES: SEE SHEET	1/2
MATERIALS: WOOD, PLASTER, PAINT	ART DEPT APPROVAL:	

1984 INT SET - MINISTRY TRUTH ENTRANCE HALL - SHEET TWO MAY 2021

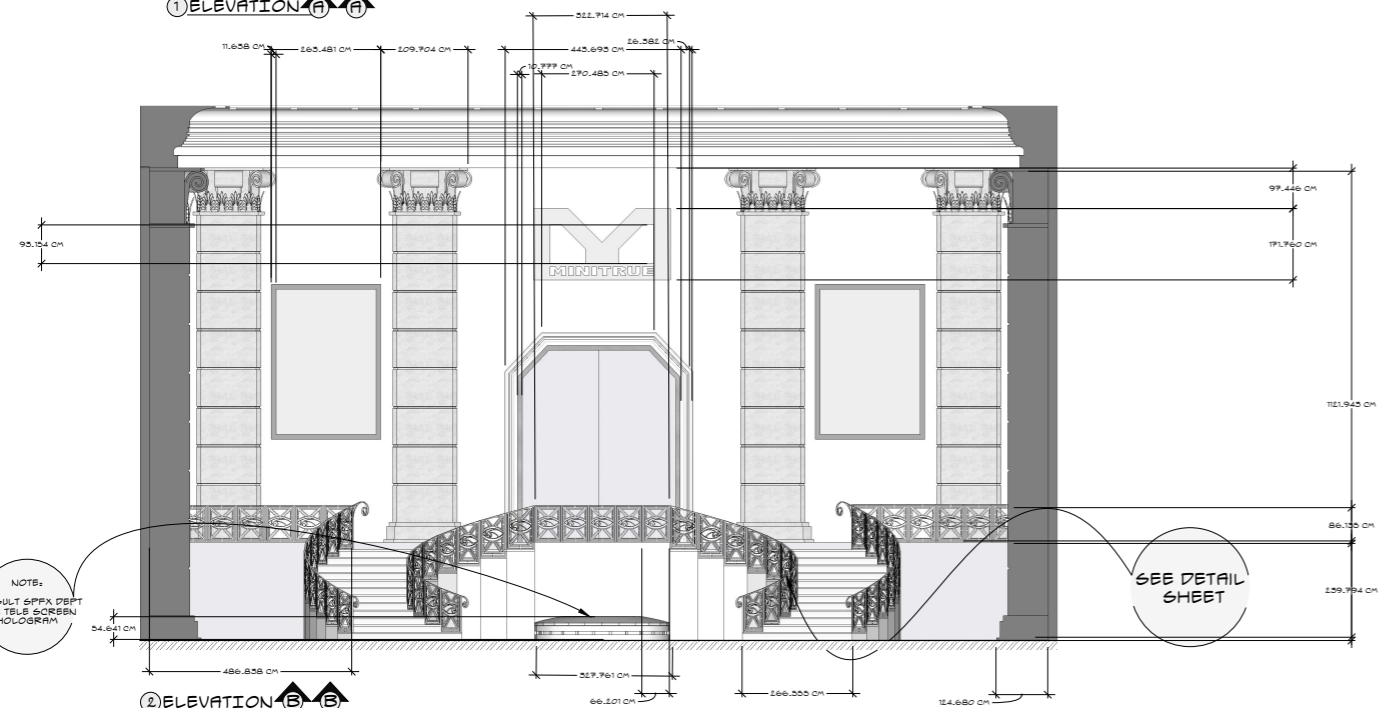


1 ELEVATION A-A



3 ELEVATION C-C

SEE DETAIL SHEET



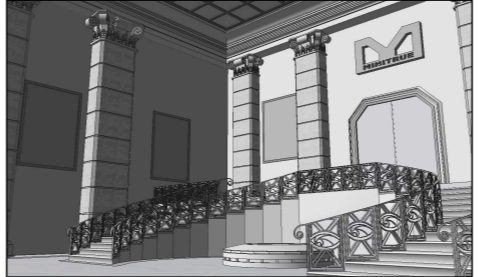
2 ELEVATION B-B

SEE DETAIL SHEET




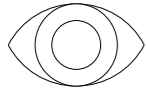
4 3D VIEW OF MODEL

NOTES:
 ALL PAINT FINISHES TBD PLEASE DISCUSS WITH ART DEPARTMENT
 CEILING TO BE TUNGSTEN BULBS- CONSULT LIGHTING DEPT.
 HOLOGRAMS FOR TELE SCREENS TBA IN POST- CONSULT SPPX.
 SEE DETAIL SHEETS FOR STAIRS, WINDOWS AND COLUMNS.
 FLOATING WALL INDICATED ON SHEET.

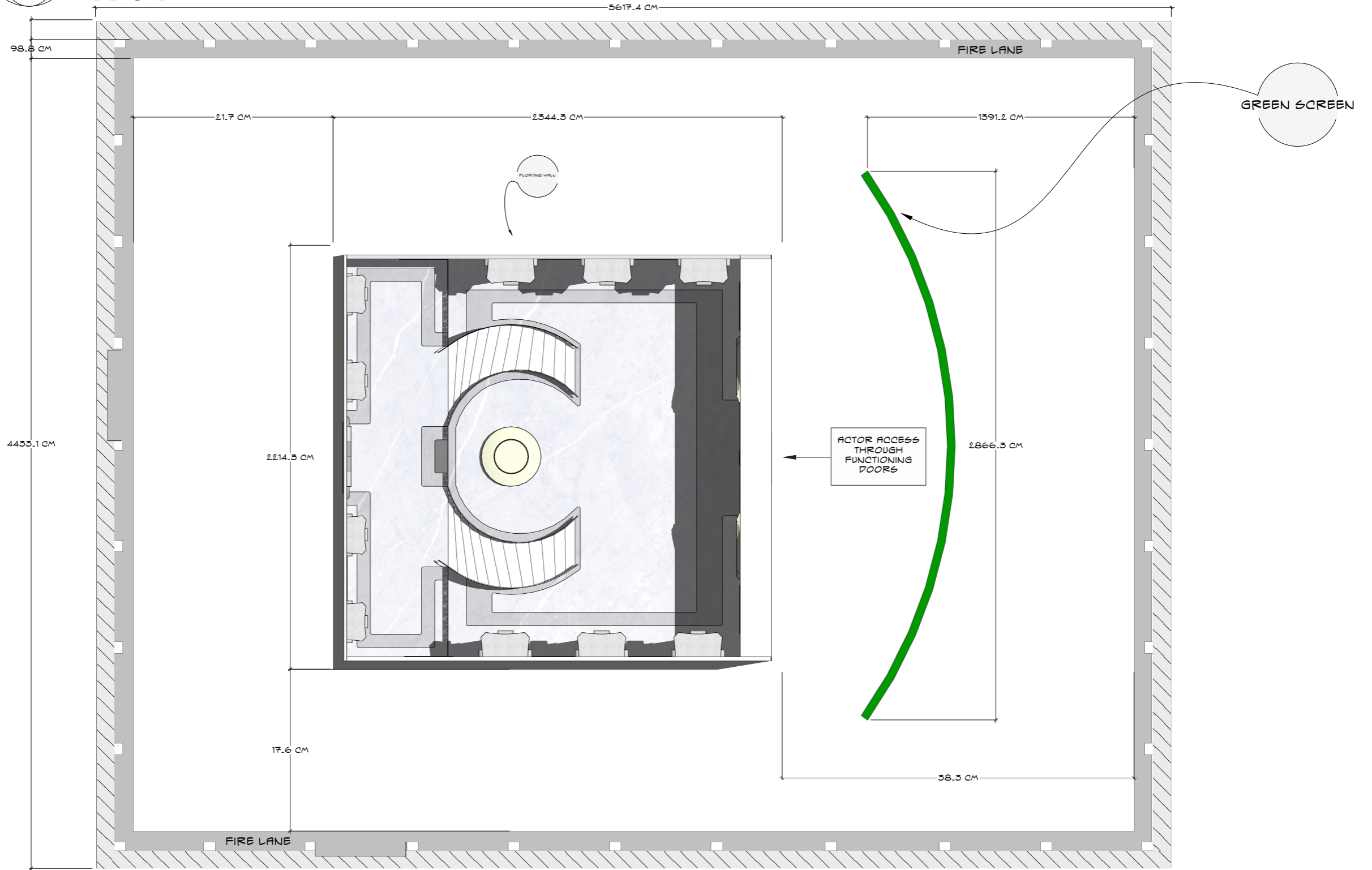


5 3D VIEW OF MODEL

 1984		
DRAWING TITLE: 1984 MINISTRY OF TRUTH ENTRANCE HALL (INT)		
PRODUCTION DESIGNER: EMILY HOLMES	LOC/STAGE: PINEWOOD STUDIOS STAGE 1	
SET: MINISTRY OF TRUTH (INTERIOR)	SCALE: 1MM:50MM (1:50)	
DRAWING BY: EMILY HOLMES	SET NO: 1	DRAWING NO:
DATE DRAWN: 15/5/21	NOTES: SEE SHEET	2/2
MATERIALS: WOOD, PLASTER, PAINT, METAL	ART DEPT APPROVAL:	



1984 STUDIO PLAN - MINISTRY TRUTH ENTRANCE - PINWOOD STUDIOS STAGE 1 - SCALE 1MM:50MM (1:50)



STUDIO PLAN

STAGE ONE- PINWOOD STUDIOS - SCALE 1MM:50MM (1:50)

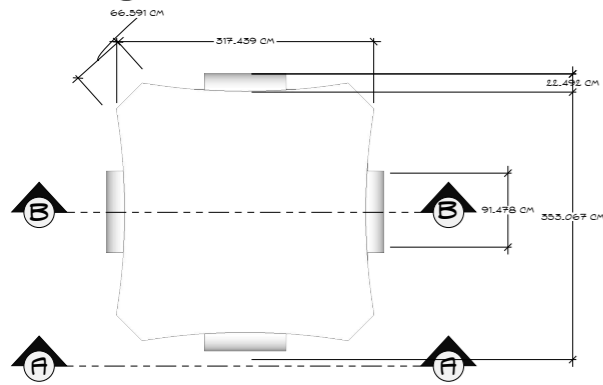
HEIGHT SPEC:
STUDIO: 1524 CM / 50'
SET: 1127 CM / 37'

NOTES:

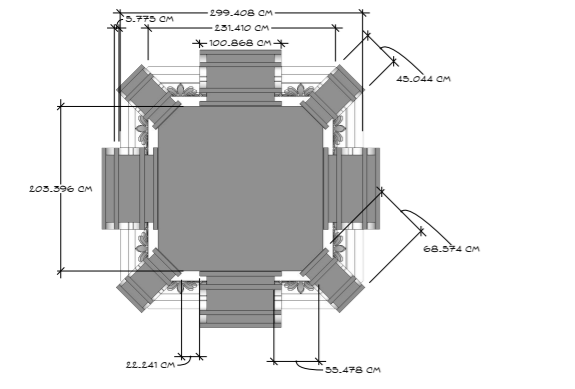
ALL PAINT FINISHES TBD PLEASE DISCUSS WITH ART DEPARTMENT
 FLOATING WALLS INDICATED ON SHEET.
 LIGHTING SET UPS INDICATED ON SHEET.
 CEILING LIGHTING TO BE INCLUDED ALSO.

1984	
DRAWING TITLE: 1984 STUDIO PLANS - MINISTRY OF TRUTH ENTRANCE	
PRODUCTION DESIGNER: EMILY HOLMES	LOC/STAGE: STAGE 1 PINWOOD STUDIOS
SET: MINISTRY OF TRUTH (INTERIOR)	SCALE: 1MM:50MM (1:50)
DRAWING BY: EMILY HOLMES	SET NO: 1
DATE DRAWN: 12/5/21	NOTES: 1
MATERIALS: WOOD, PLASTER, PAINT	ART DEPT APPROVAL:
	1/1

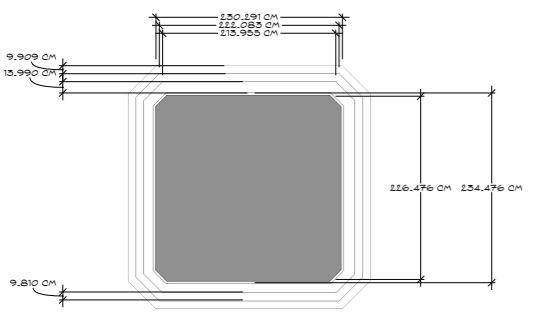
1984 INT SET - MINISTRY TRUTH ENTRANCE COLUMN DETAIL SHEET ONE MAY 2021



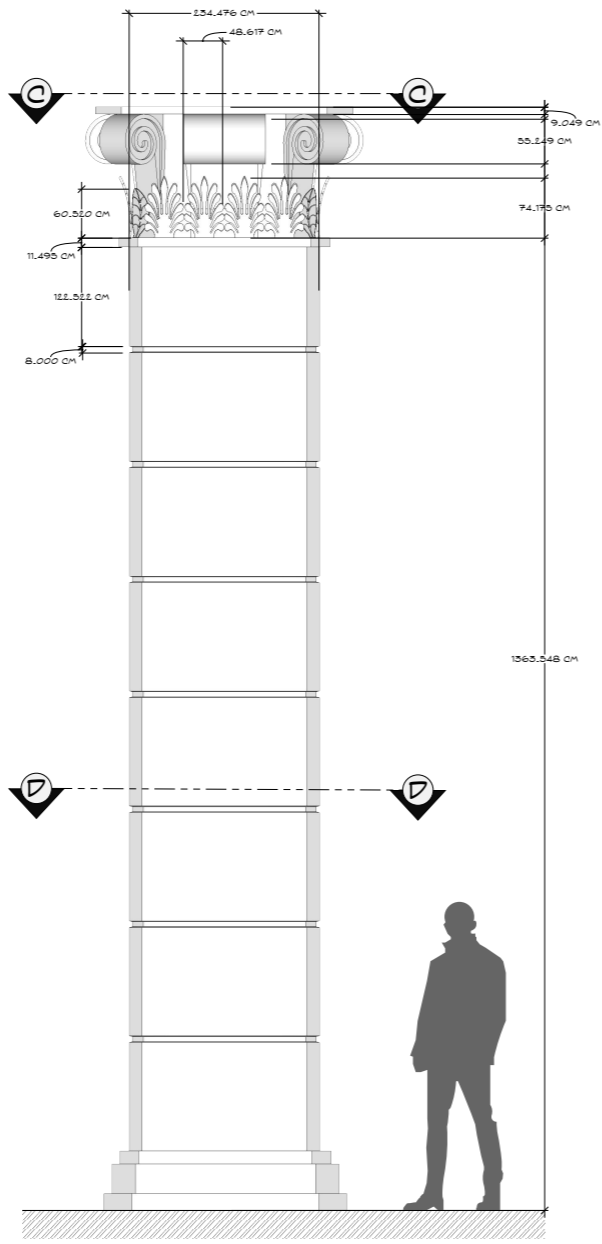
1 PLAN



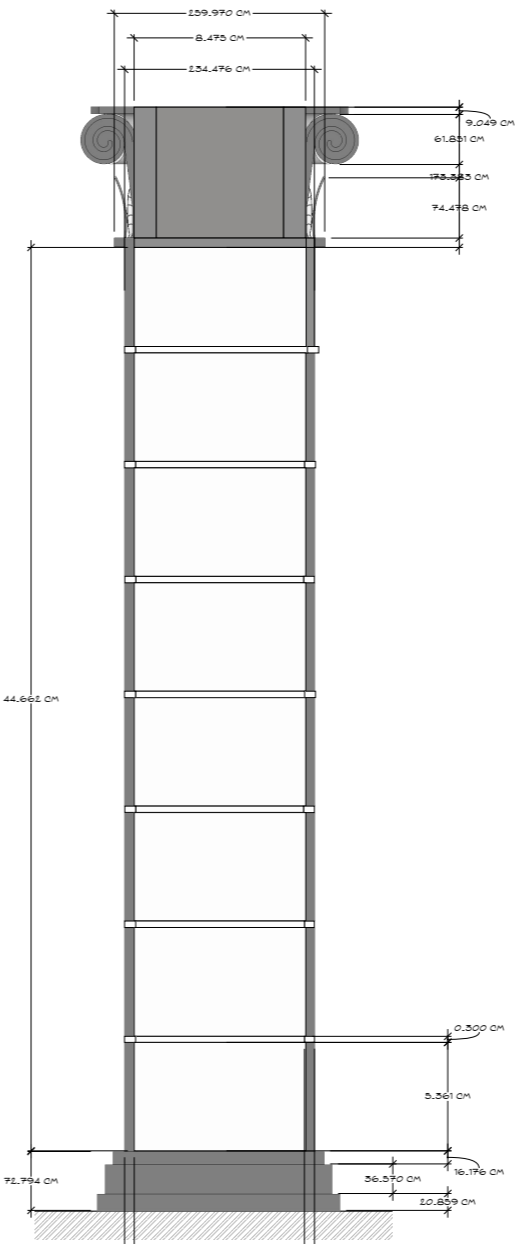
2 PLAN SECTION THRU C-C



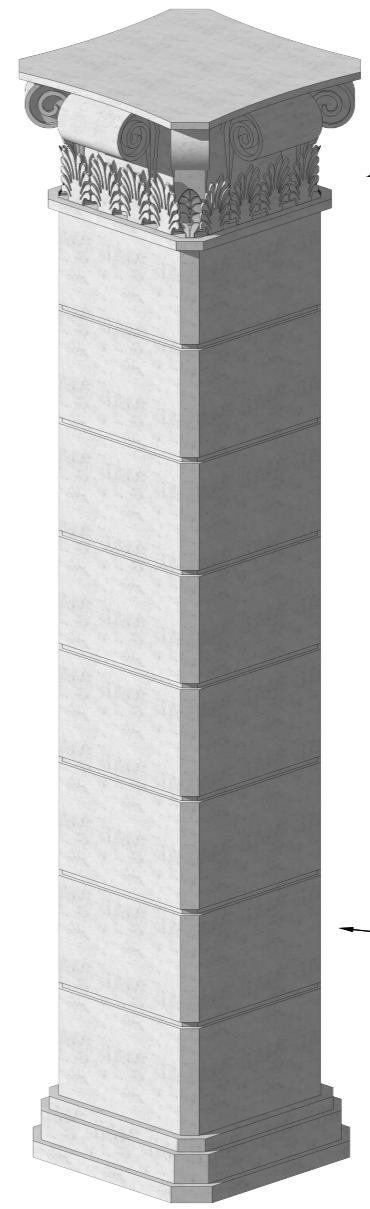
3 PLAN SECTION THRU D-D



4 ELEVATION A-A



5 ELEVATION B-B

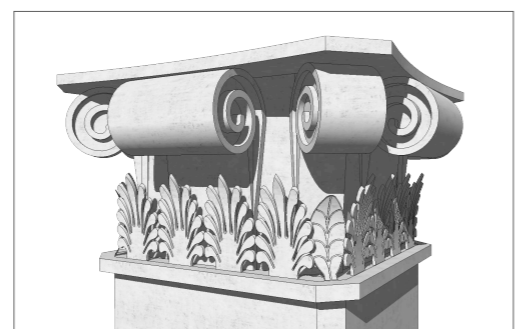


6 ISOMETRIC VIEW OF MODEL

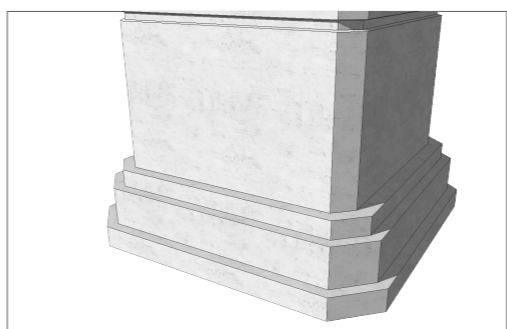
SEND BOTH LEAVES TO CONSTRUCTION TO INTERPRET

SEE MATERIALS SHEET AND NOTES FOR CONSTRUCTION


NOTES:
 -SEE TEXTURE SHEET FOR ALL TEXTURES TO BE GIVEN TO CONSTRUCTION
 -COLUMNS USED THROUGHOUT SET ARE VERTICALLY DIVIDED THROUGH SECTION BB
 -CONCRETE FINISH PAINTED ON COLUMNS
 -SEND 4 LEAVES AND 16 MOTIFS TO CARPENTRY
 -GREY SOLID HATCHING INDICATES WHERE THE MODEL IS SOLID
 -COLUMN TO BE HOLLOW TO BE EASILY MOVED
 -ELEVATION SAME ON FOUR SIDES



PERSPECTIVE DETAIL 1



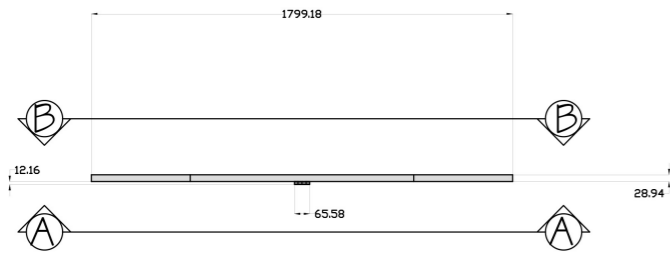
PERSPECTIVE DETAIL 2

 1984		
DRAWING TITLE: 1984 INT SET- MINISTRY OF TRUTH ENTRANCE- COLUMN		
PRODUCTION DESIGNER: EMILY HOLMES	LOC/STAGE: PINWOOD STUDIOS STAGE 1	
SET: MINISTRY OF TRUTH (INTERIOR)	SCALE: 1MM-25MM (1:25)	
DRAWING BY: EMILY HOLMES	SET NO: 1	DRAWING NO:
DATE DRAWN: 12/5/21	NOTES: 1	1/1
MATERIALS: WOOD, PLASTER, PAINT	ART DEPT APPROVAL:	

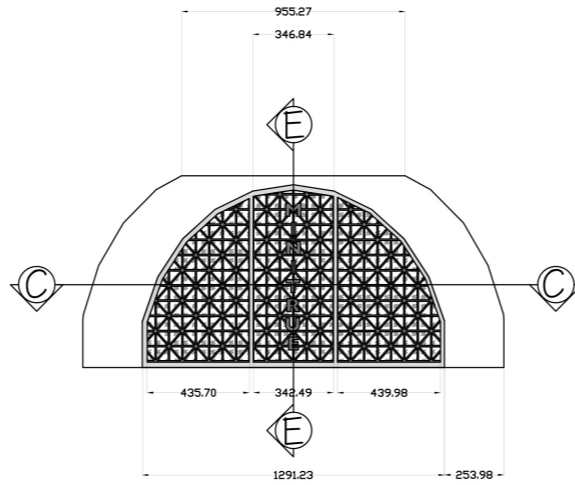


1984

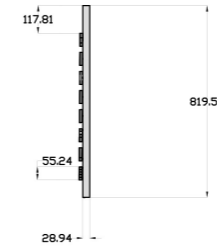
ENTRANCE HALL (INT) - WINDOW DETAIL SHEET ONE - MAY 2021



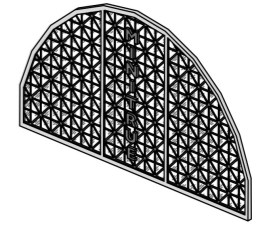
① PLAN



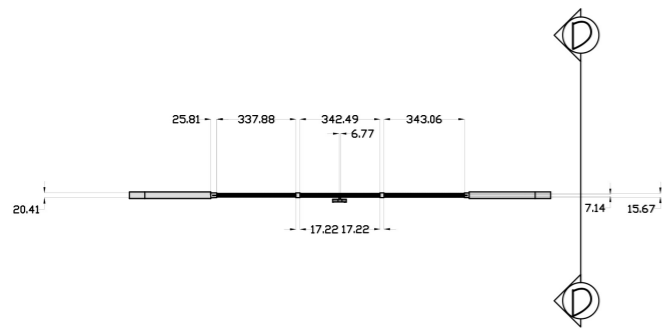
③ ELEVATION A-A



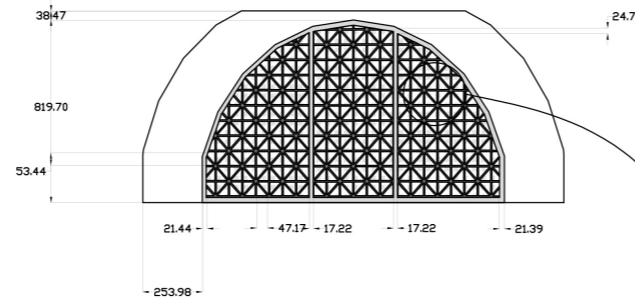
⑤ ELEVATION D-D



⑦ ISO VIEW



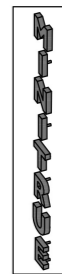
② PLAN SECTION C-C



④ ELEVATION B-B



⑥ ELEVATION E-E



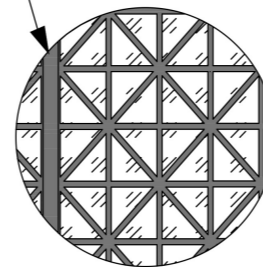
MATERIAL:
BLACK BRUSHED METAL

⑧ 3D VIEW

NOTES:
-3D VIEW AND PANE DETAIL NOT TO SCALE
-DRAWING SHOWS WINDOW AND IT'S WALL, REFER TO ENTRANCE HALL TECH DRAWING FOR POSITIONING ETC.
-CONSULT CONSTRUCTION FOR MATERIALS.

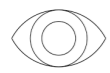


⑨ 3D VIEW

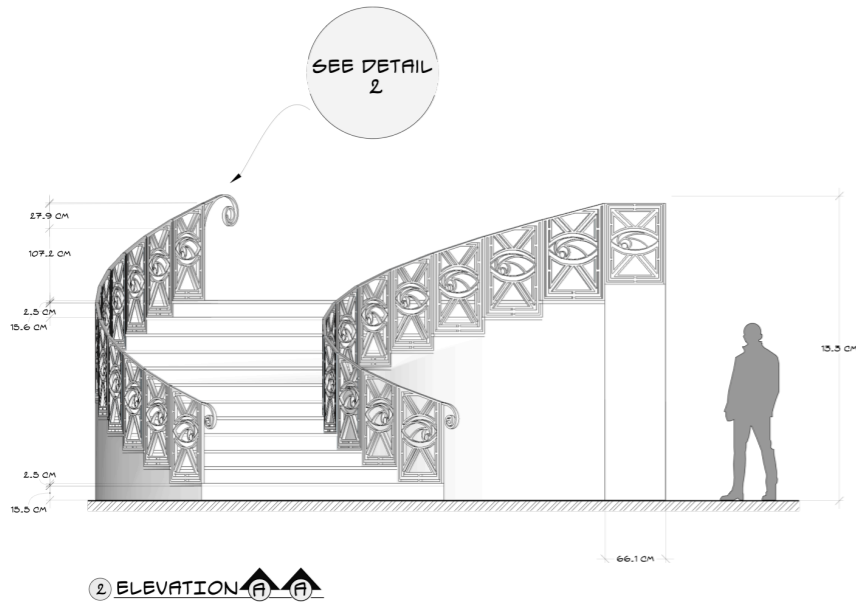


⑩ PANE DETAIL

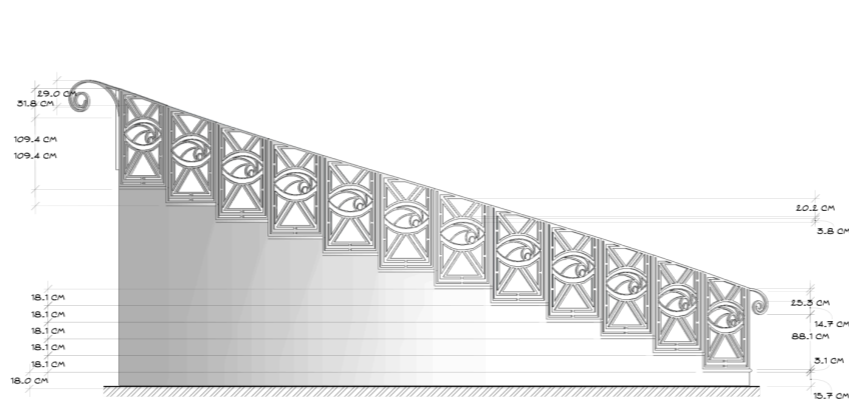
PRODUCTION DESIGN BY: EMILY HOLMES	
DRAWING BY: EMILY HOLMES	DATE DRAWN: 15/5/21
SET: ENTRANCE HALL (INT)	DATE ISSUED: 16/5/21
DRAWING TITLE: "1984 ENTRANCE HALL (INT) - WINDOW DETAIL SHEET ONE"	DRAWING NO:
LOC/STAGE: PINWOOD STUDIOS STAGE 1	SCALE: 1MM:20MM (1:20)
NOTES: SEE NOTE BOX	1/1



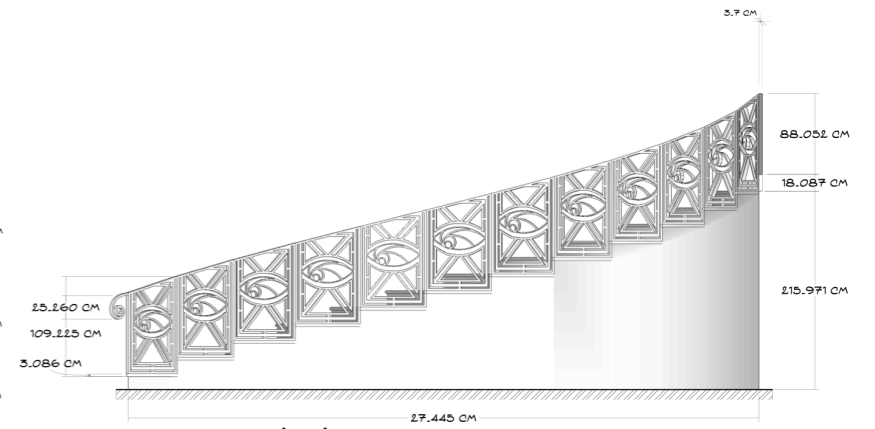
'1984' MINISTRY OF TRUTH ENTRANCE HALL - STAIR DETAIL - SHEET ONE MAY 2021



2 ELEVATION A-A

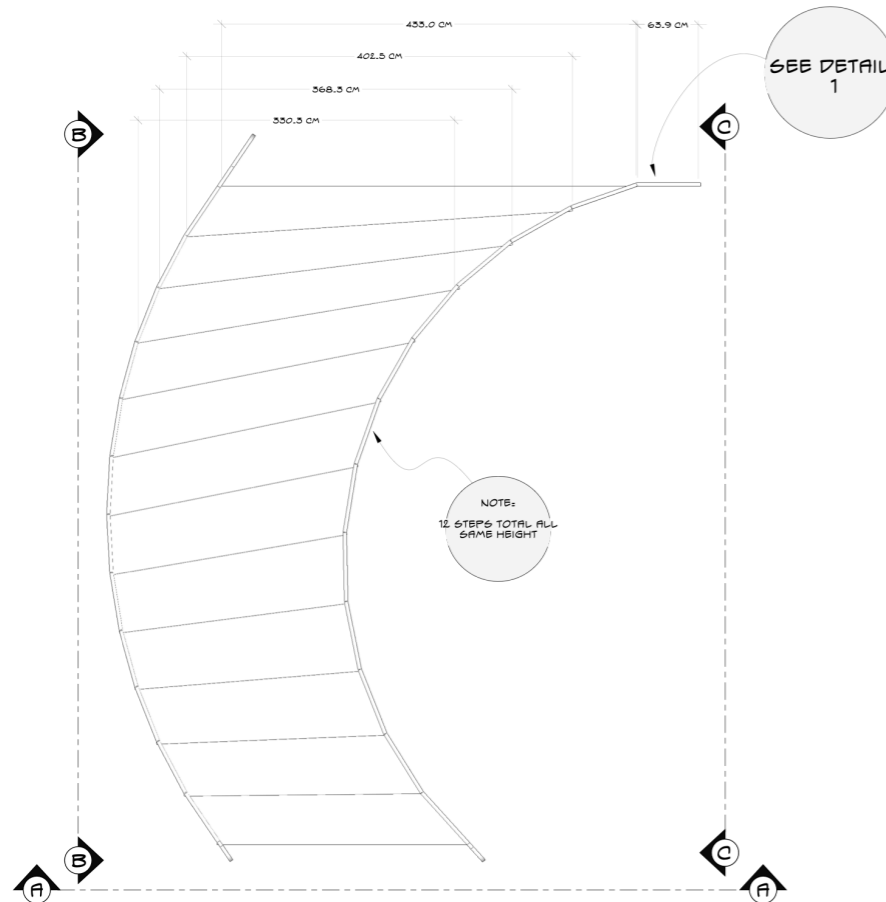


3 ELEVATION B-B

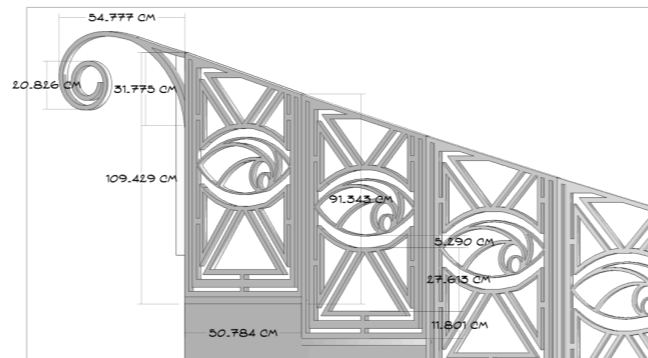


4 ELEVATION C-C

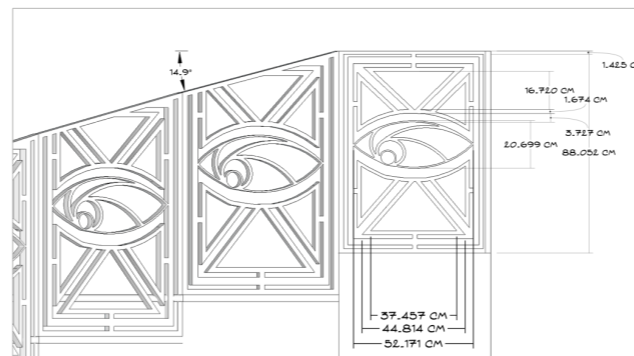
NOTE:
REFER TO TEXTURE
AND RENDER BOARDS



1 PLAN



5 DETAIL 1 SCALE (1:10)

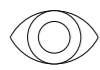


6 DETAIL 2 SCALE (1:10)

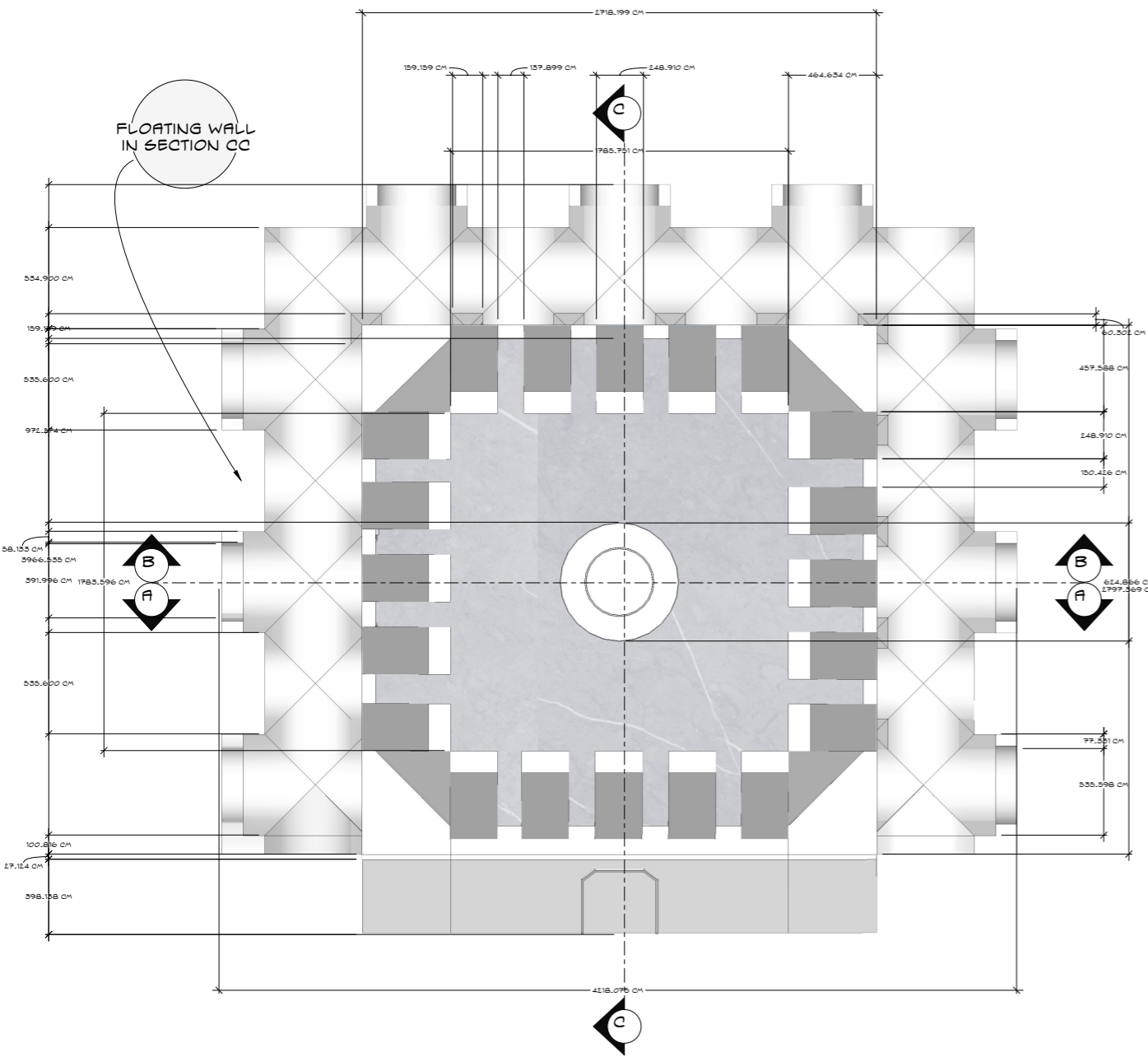
NOTES:
ALL PAINT FINISHES TBD PLEASE DISCUSS WITH ART DEPARTMENT
ROUGH DIMENSIONS AND THICKNESS GIVEN ON DETAILS 1 AND 2.
DETAILS 1 AND 2 IN SCALE 1" = 1'-0" (1:12)
RAILINGS ON ELEVATION BB AND CC ARE DIFFERENT.
REFLECT TECH DRAWING FOR OTHER HALF OF STAIRS.
DIFFERENT TYPE OF RAILING GIVEN AGAIN IN ELEVATION AA AND DETAIL 1- THIS IS THE DIMENSIONS FOR THE STRAIGHT RAILS FOR THE STAIR CASE AND MEZZANINE.
THANKS.



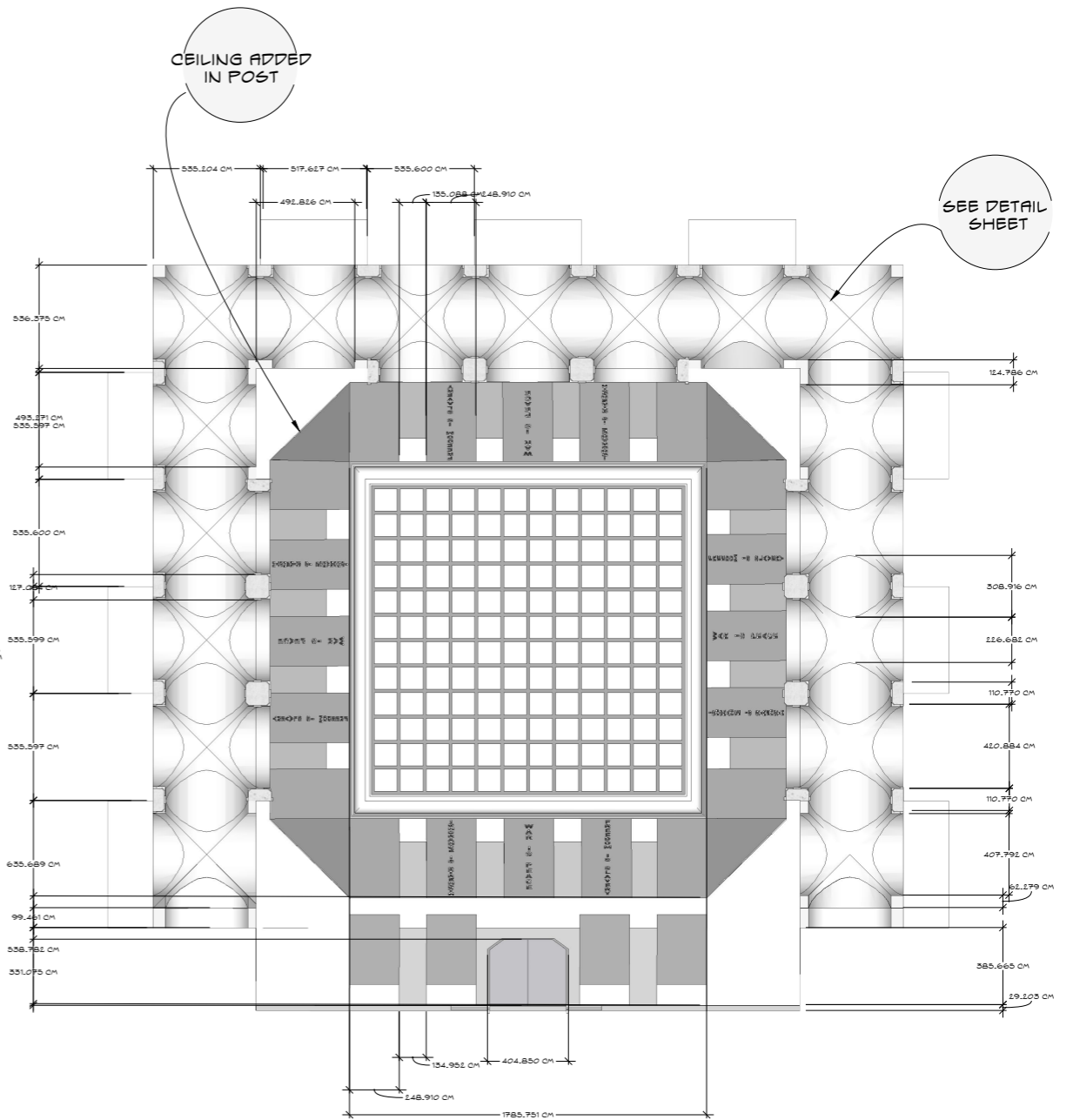
DRAWING TITLE: 1984 MINISTRY OF TRUTH ENTRANCE HALL (INT) - STAIR DETAIL		
PRODUCTION DESIGNER: EMILY HOLMES	LOC/STAGE: TBA	
SET: MINISTRY OF TRUTH (INTERIOR)	SCALE: 1MM=25MM (1:25)	
DRAWING BY: EMILY HOLMES	SET NO: 1	DRAWING NO:
DATE DRAWN: 12/5/21	NOTES: 1	1/1
MATERIALS: WOOD, PLASTER, PAINT	ART DEPT APPROVAL:	



1984 INT SET - MINISTRY OF TRUTH OFFICE - SHEET ONE MAY 2021



① PLAN



② REFLECTED PLAN

NOTES:

ALL PAINT FINISHES TBD PLEASE DISCUSS WITH ART DEPARTMENT.

SEE DETAIL SHEET ONE FOR COLUMN SPECS.

TELESCREEN HOLOGRAM TO BE ADDED IN POST.

CEILING TO BE GREEN SCREEN.

ACTOR ACCESS THROUGH SLIDING DOORS

FLOATING WALL INDICATED ON SHEET



1984

DRAWING TITLE: 1984 INT SET- MINISTRY OF TRUTH OFFICE

PRODUCTION DESIGNER: EMILY HOLMES

LOC/STAGE: TBA

SET: MINISTRY OF TRUTH (INTERIOR)

SCALE: 1MM=100MM (1:100)

DRAWING BY: EMILY HOLMES

SET NO: 1

DRAWING NO:

DATE DRAWN: 12/5/21

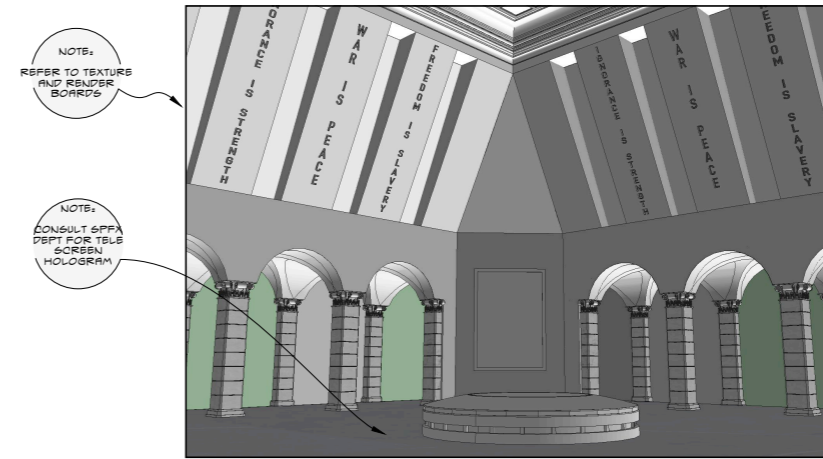
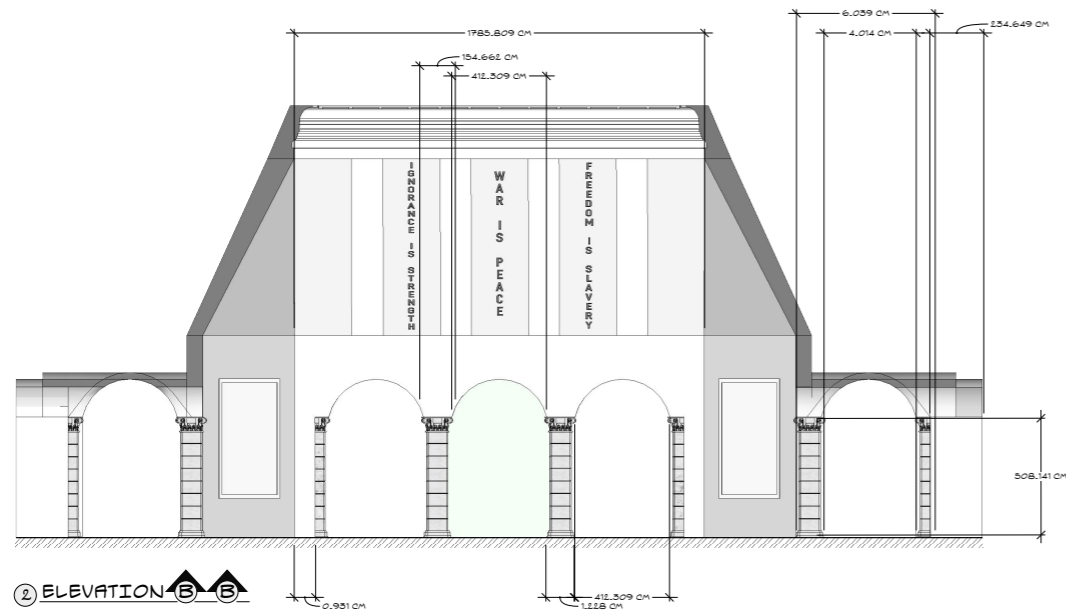
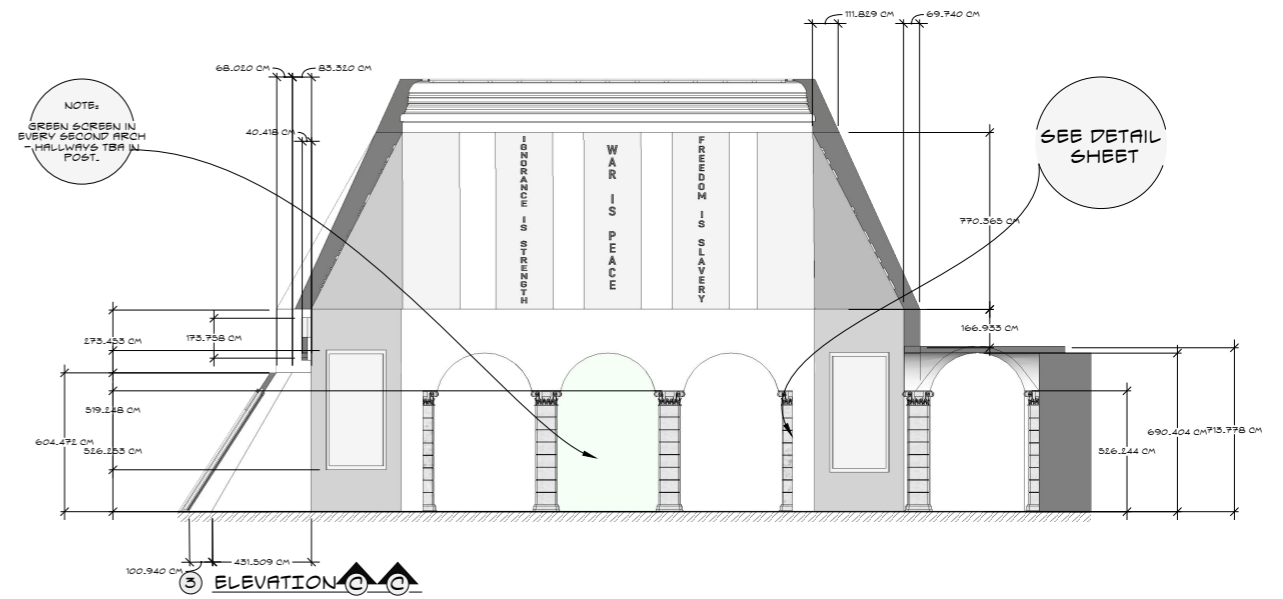
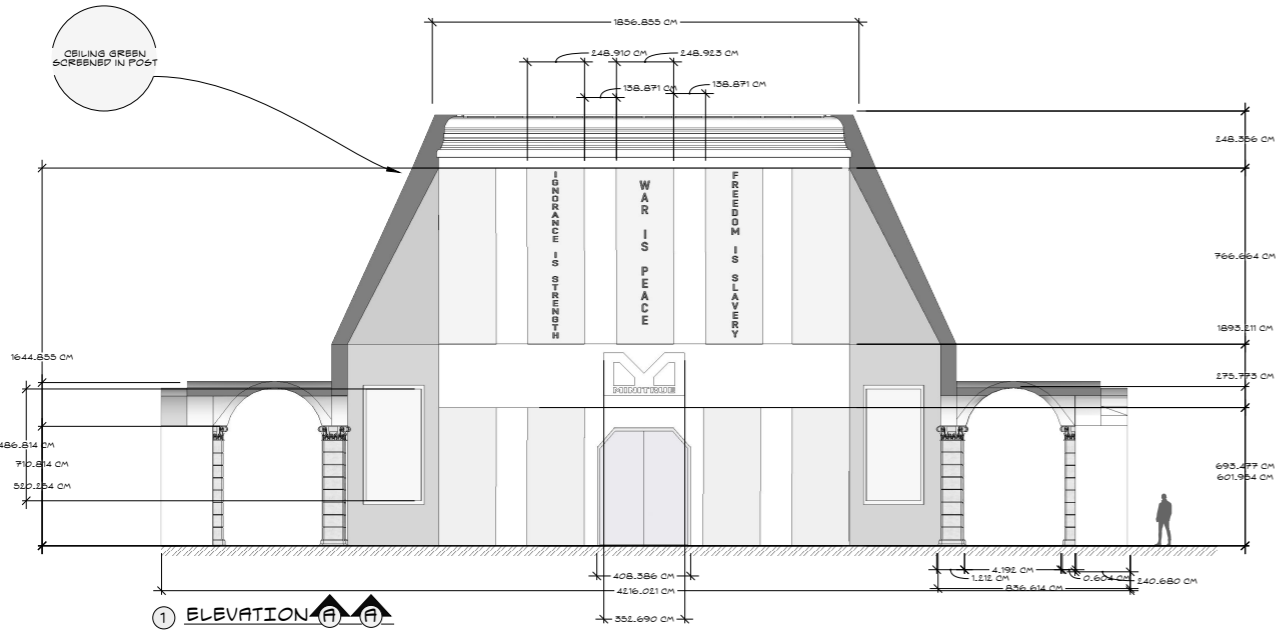
NOTES:
SEE SHEET

MATERIALS: WOOD, PLASTER, PAINT

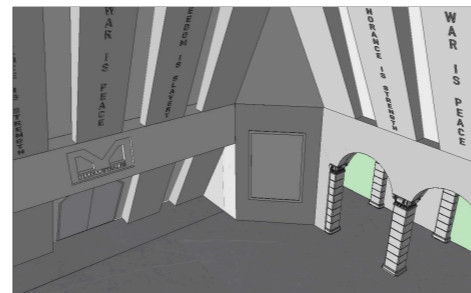
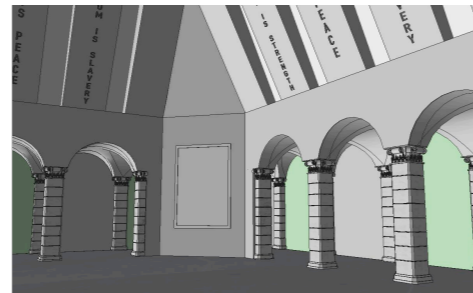
ART DEPT
APPROVAL:


1/2

'1984' SET - MINISTRY OF TRUTH OFFICE (INT) SHEET TWO MAY 2021

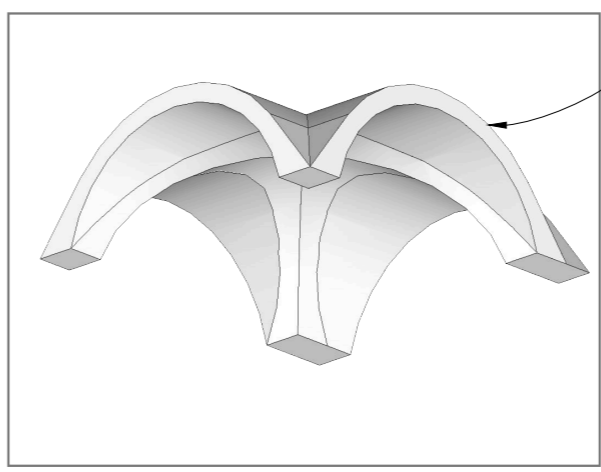
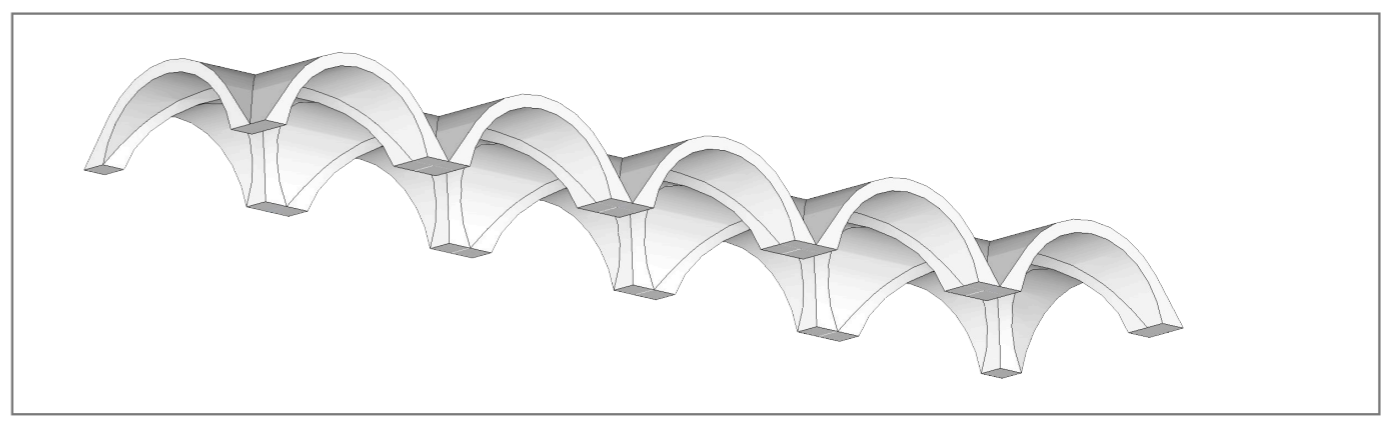
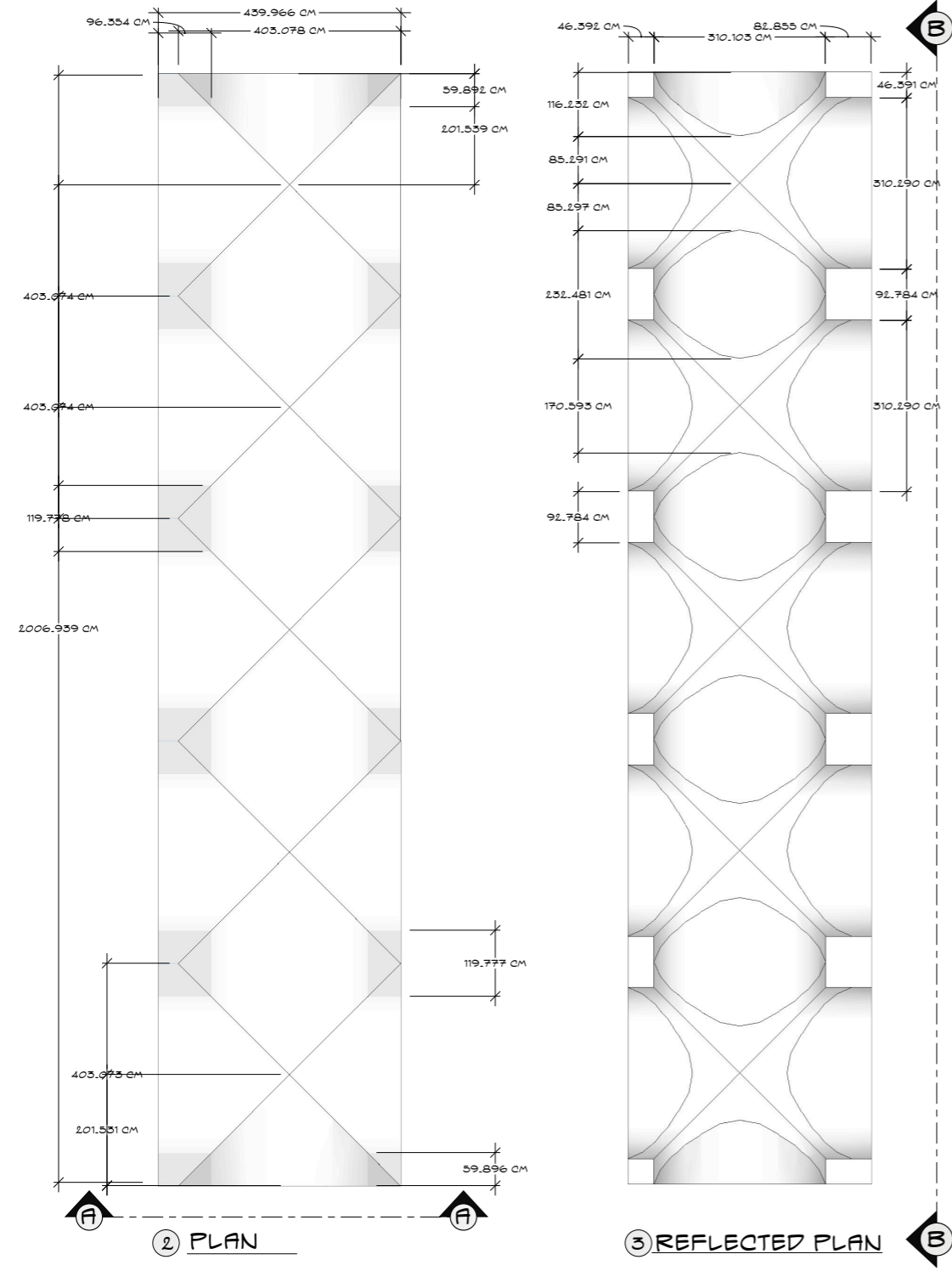
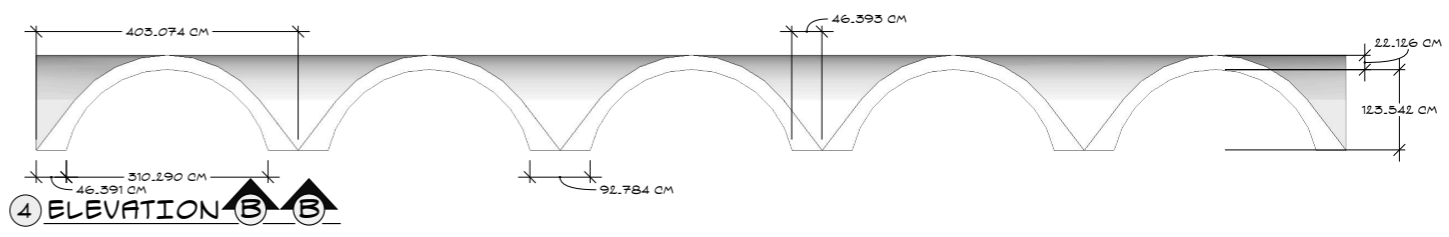
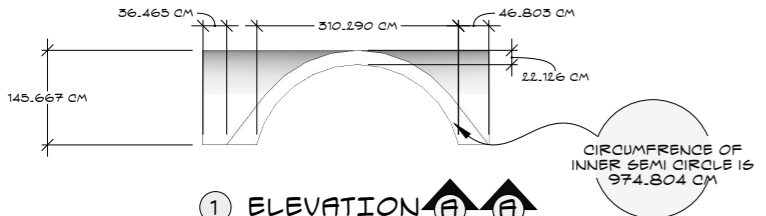


NOTES:
 ALL PAINT FINISHES TBD PLEASE DISCUSS WITH ART DEPARTMENT
 GREEN COLOUR IN ARCHES IN MODEL AND DRAWINGS INDICATE GREEN SCREEN - PLEASE CONSULT WITH SFX DEPT ABOUT HALLWAYS TBD.
 ARTIFICIAL LIGHT FROM CEILING TO BE TUNGSTEN BULBS, CONSULT LIGHTING DEPT.
 POSTERS ON WALLS TO BE ADDED IN SET DRESSING AND POST PRODUCTION SFX FOR MOVING IMAGES.
 HOLOGRAPH TELE SCREEN ADDED POST ALSO, CONSULT SFX.
 THANKS.

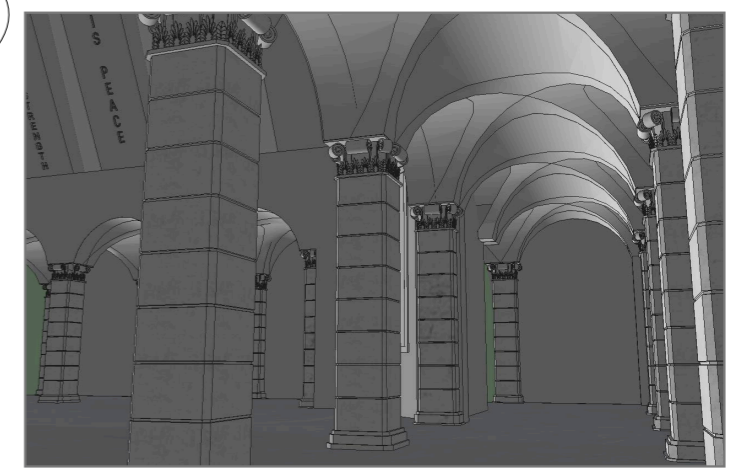


 1984		
DRAWING TITLE: 1984 SET- MINISTRY OF TRUTH OFFICE (INT)		
PRODUCTION DESIGNER: EMILY HOLMES	LOC/STAGE: TBA	
SET: MINISTRY OF TRUTH (INTERIOR)	SCALE: 1MM:100MM (1:100)	
DRAWING BY: EMILY HOLMES	SET NO: 2	DRAWING NO:
DATE DRAWN: 16/5/21	NOTES: SEE ON PAGE	2/2
MATERIALS: WOOD, PLASTER, PAINT, METAL	ART DEPT APPROVAL:	

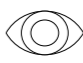
'1984' SET- MINISTRY OF TRUTH OFFICE- ARCHES DETAIL SHEET ONE - MAY 2021



MATERIAL: STUCCO WORK AND WORN PLASTER



NOTES:
 ALL PAINT FINISHES TBD PLEASE DISCUSS WITH ART DEPARTMENT.
 COLUMNS TO FIT UNDER EACH ARCH.
 ARCH ROWS REPEATED THROUGHOUT SET, REFER TO "1984 SET- MINISTRY OF TRUTH OFFICE (INT)" DRAWING FOR PLACEMENT DETAILS.
 GREEN SCREENS TO BE FITTED THROUGH HALF OF ARCHES AS SEEN IN "1984 SET- MINISTRY OF TRUTH OFFICE (INT)".
 CIRCUMFERENCE OF RADIUS OF INNER SEMI CIRCLE GIVEN ABOVE, EXTERNAL SEMI CIRCLE OFFSET BY 1' 6".
 REFER TO TEXTURE BOARDS BEFORE PAINTING AND CONSTRUCTION FOR LIGHTWEIGHT MATERIALS.
 THANKS.

 1984		
DRAWING TITLE: 1984 SET- MINISTRY OF TRUTH OFFICE- ARCHES DETAIL		
PRODUCTION DESIGNER: EMILY HOLMES	LOC/STAGE: TBA	
SET: MINISTRY OF TRUTH (INTERIOR)	SCALE: 1MM:50MM (1:50)	
DRAWING BY: EMILY HOLMES	SET NO: 1	DRAWING NO:
DATE DRAWN: 12/5/21	NOTES: SEE PAGE	1/1
MATERIALS: WOOD, PLASTER, PAINT	ART DEPT APPROVAL:	

1984 LOCATION ADAPTATION (EXT): PICADILLY CIRCUS

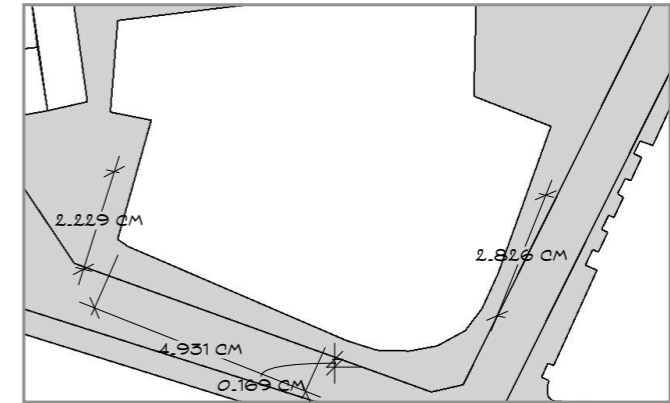


1 OVERALL LOCATION PLAN: SCALE 1:500

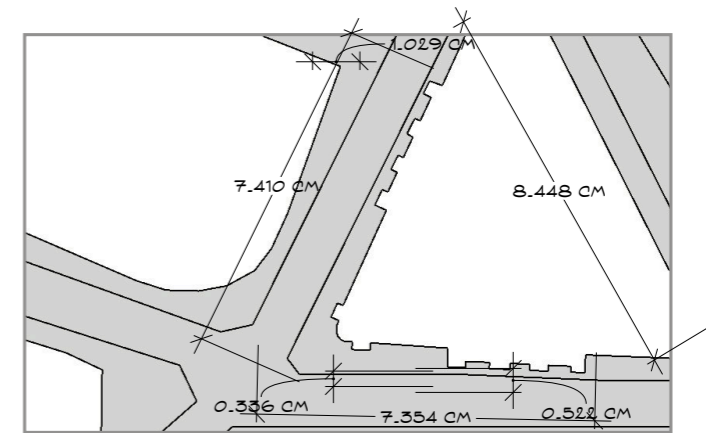
■ LOCATIONS FOR SET BUILD



□ LOCATIONS NOT IN SHOT

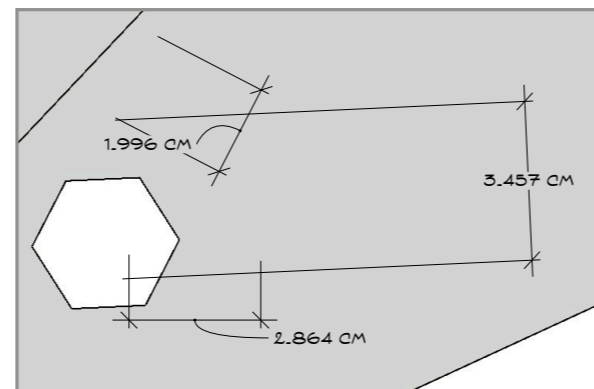


2 BUILDING SITE 1: SCALE 1:1000



3 BUILDING SITE 2: SCALE 1:1000

NOTES:
 SEE FINISHED RENDERS FOR FINAL CONCEPT.
 OPEN FOR INTERPRETATION BY ART DEPARTMENT AND CONSTRUCTION.
 SET BUILDS OVER CURRENT MEASUREMENTS.
 CONTACT COUNCIL FOR REMOVAL OF STREETLAMPS AND BINS.
 OVERALL LOCATION IN SCALE 1:500 AND DETAILED ONES IN SCALE 1:1000.



4 BUILDING SITE 3: SCALE 1:1000

DRAWING TITLE: 1984 LOCATION ADAPTATION: PICADILLY CIRCUS		
PRODUCTION DESIGNER: EMILY HOLMES	LOC/STAGE: PICADILLY CIRCUS	
SET: PICADILLY CIRCUS (EXTERIOR)	SCALE: 1MM=500MM (1:500) AND 1MM=1000MM (1:1000)	
DRAWING BY: EMILY HOLMES	SET NO: 1	DRAWING NO:
DATE DRAWN: 12/5/21	NOTES: 1	1/1
MATERIALS: WOOD, PLASTER, PAINT, CONCRETE, GLASS, NEON	ART DEPT APPROVAL:	